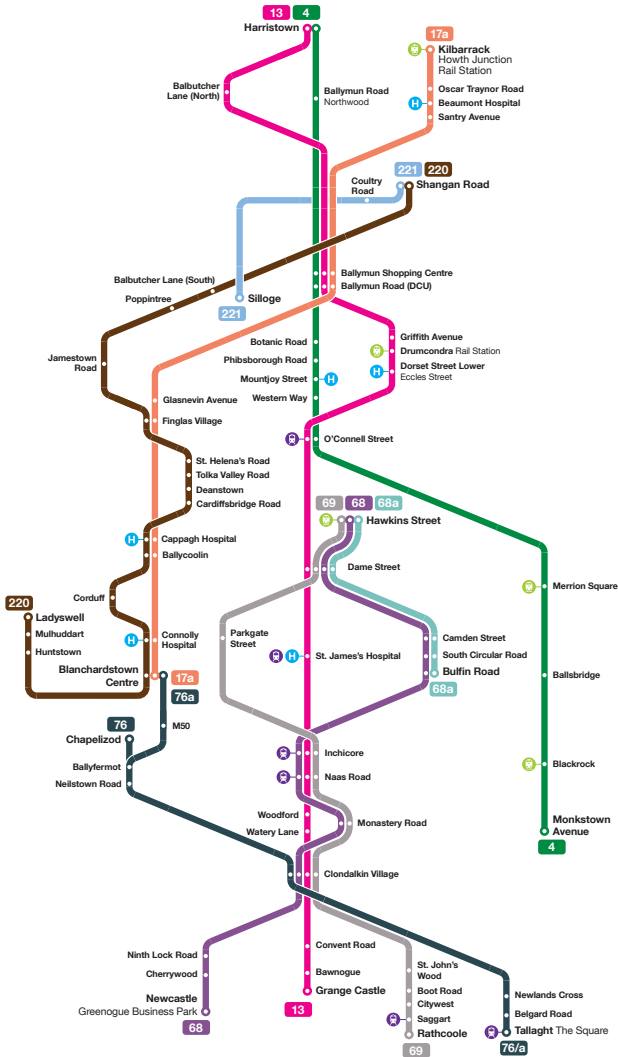


Route Diagram

This route diagram displays the routes of selected bus services in the area. It is designed to accommodate the main routes and areas along the corridor and is not a geographic representation of the area. The aim is to provide a clear understanding of the routes available and the interconnections on the corridor, providing information on the bus travel options enabling greater customer choice.



Timetable Changes

All timetables have been redesigned so that they are easier to understand. Please note that new timetables read from left to right and then line by line as in a book or magazine. Weekdays are given their own column separated by colour. All Routes will now have stop-specific departure times at selected locations for e.g. Route 13 will have specific departure times from Parnell Square East and West making it easier to plan your journey.

New timetables for the routes are available on **www.dublinbus.ie**

Saturday				Sunday		
07:00	07:40	08:20	09:00	10:20	10:30	10:40
09:40	10:15	10:45	11:15	10:50	11:00	11:10
11:45	12:15	12:45	13:15	11:20	11:30	11:40
13:45	14:15	14:45	15:15	11:50	12:00	12:10
15:45	16:15	16:45	17:15	12:20	12:30	12:40
17:45	18:15	18:55	19:25	12:50		
20:20	21:00	21:40	22:20			
23:00	23:30					

For more information visit

www.dublinbus.ie/network-direct

Dublin Bus Head Office, 59 Upper O'Connell Street, Dublin 1.

Call 01 873 4222 from 8.30am–06.00pm.

Email networkdirect@dublinbus.ie



Like us at www.facebook.com/DublinBusNews



Follow us @dublinbusnews

Social media monitored from 8am – 6pm Mon-Fri and out of hours during periods of severe disruption.

This was printed using FSC approved material.
Please reduce the amount of waste by recycling.

Information correct at time of print: October 2011.

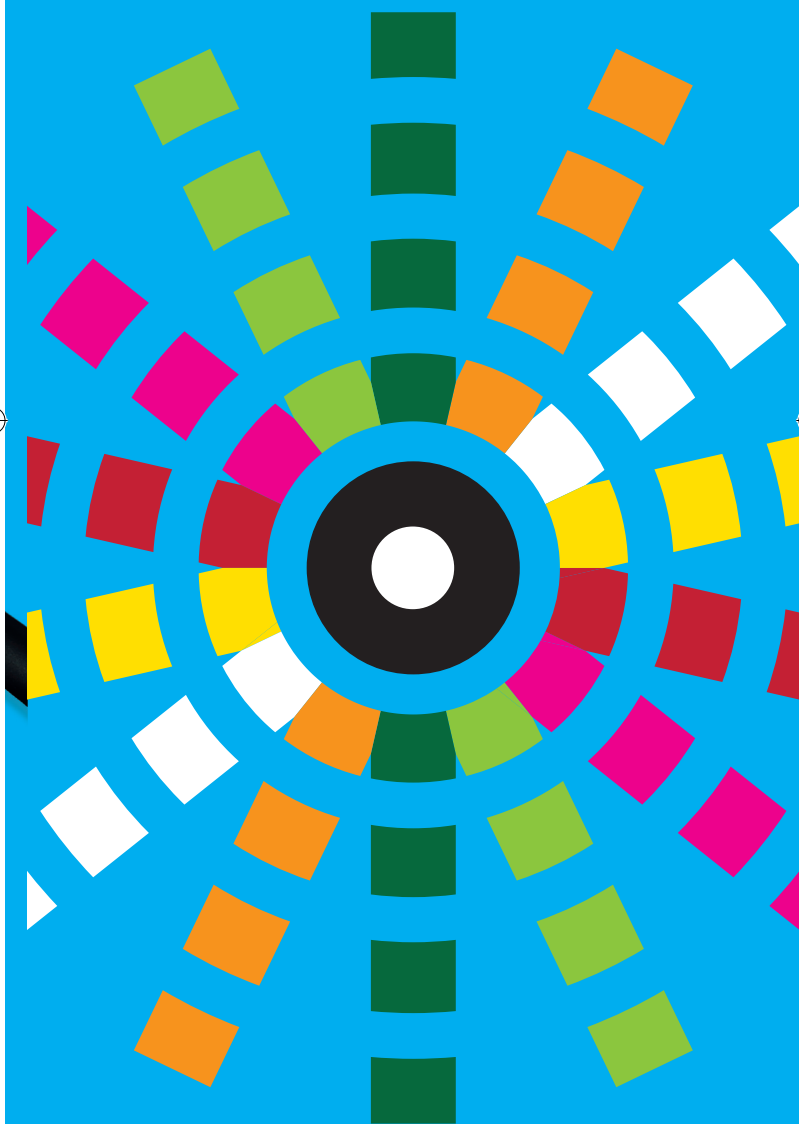


Dublin Bus

Network Direct

Ballymun, Clondalkin & Inchicore

2nd October 2011



Network Direct is a redesign of bus services in Dublin City to provide a more direct, high frequency and punctual service.

What does Network Direct mean for you?

Implementation will commence on 2nd October 2011 which will provide the Ballymun, Clondalkin and Inchicore areas with a more direct, high frequency and punctual bus service with improved cross city connections.

Quicker journey times

Quicker journey times to key destinations including Dorset Street, O'Connell Street, Dame Street, Christchurch and St. James's Hospital.

High frequency services

Route 13 will have peak weekday frequencies of 12 minutes or better significantly improving the frequency of services in the Bawnogue and Drumcondra areas.

Route Alterations

- 13** 13/a & 51b/c – Routes 13/a & 51b/c will be amalgamated and operate as Route 13.
- 13** Route 13 will provide a high frequency cross city connection between Ballymun and Clondalkin via Harristown, Balbutcher Lane, Ballymun Main Street, DCU, Griffith Avenue, Drumcondra, Dorset Street, O'Connell Street, Dame Street, St. James's Hospital, Emmet Road, Inchicore, Naas Road, Woodford, Watery Lane, Clondalkin Village, Convent Road and Bawnogue
- 13** Route 13 will no longer serve Glasnevin Hill. Alternative service in this area is high frequency Route 83 operating cross city.

68 Route 68 operates from Newcastle to the city centre (Hawkins Street) via Cherrywood, Clondalkin Village, Monastery Road, Naas Road, Inchicore, Emmet Road, South Circular Road, Camden Street and Dame Street. It also provides for more direct access to key City Centre locations.

69 Route 69 operates to the city centre (Hawkins Street) from Rathcoole via St. John's Wood, Clondalkin Village, Monastery Road, Inchicore, Con Colbert Road, Parkgate Street and Dame Street. Route 69 now offers improved customer friendly timetables

220 Route 220 will be extended to Shangan providing our customers in Ballymun with direct connections to Poppintree, Finglas, Ballycoolin & Blanchardstown Centre. Route 220 will also serve Deanstown in Finglas.

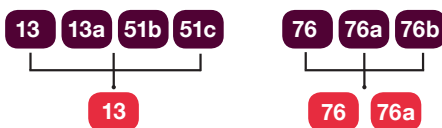
221 Route 221 will operate every 30 minutes off peak providing a local service connecting Shangan, Coultry & Silloge with Ballymun Shopping Centre.

- **Routes 4, 17a, 51x, 69x & 151 will remain unchanged**
- **Route 51d will continue to operate with a revised evening timetable. No change to morning services**

Route Improvements

- Journey times on Route 13 will be significantly improved with trips between the city centre and Ballymun no longer operating via the Silloge and Coultry loops. Route 13 will no longer operate via St. Margaret's Road (IKEA). Customers wishing to travel to IKEA on Route 13 should now use the dedicated walkway from Balbutcher Lane opposite the pedestrian entrance to IKEA.
- Route 17a is now more direct and operates from Kilbarrack via Ballymun to Blanchardstown Centre. It operates every 10 minutes at peak times toward Blanchardstown Centre in the mornings with a 20 minute service throughout the day.
- Route 76 will continue to provide customers from Clondalkin with a direct connection to Liffey Valley, Ballyfermot and Blanchardstown Centre. This will be changed at a later date.

Route Amalgamations



Thank you for travelling with Dublin Bus.